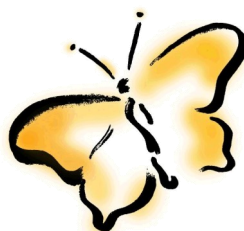


Side Dressing Vegetables



Campbell's
CULTIVATING IDEAS

2342 South 40th Street
(402) 483-7891

5625 Pine Lake Road
(402) 423-1133

www.campbellsnursery.com



CROP

TIME OF APPLICATION

ASPARAGUS	After growth starts in spring and after harvesting to promote fern growth
*BEANS	No need to side-dress
*BEETS	No need to side-dress
BROCCOLI	Three weeks after transplanting
CABBAGE	Three weeks after transplanting
CAULIFLOWER	Three weeks after transplanting
*CARROTS	No need to side-dress
CUCUMBERS	When plants 'stand up' just before they start to run
EGGPLANTS	When they start to bloom
KALE	Four weeks after planting
*LETTUCE	No need to side-dress
MUSKMELON	At 'stand up' stage
ONIONS	Four weeks and six weeks after planting
*PEAS	No need to side-dress
PEPPERS	When they start to blossom
Potatoes	At last hilling, before they start to blossom
*Spinach	No need to side-dress
Squash	At 'stand up' stage, just before plants start to run
Tomatoes	When they start to blossom
*Turnip	No need to side-dress
Watermelon	At 'stand up' stage before plants start to run

* Assuming fertilizer has been worked into the soil prior to planting

